

# MPPT Solar charge controller with load control



## iTracer series

iTracer is an industrial grade product with advanced Maximum Power Point Tracking (MPPT) algorithm. It can deliver the maximum available power for charging batteries and charge a lower nominal voltage battery from a higher nominal voltage array. And can be applied in the off-grid PV systems up to 3KW. The die-cast aluminum design ensures excellent heat dispersion.



### Models:

IT3415ND, IT4415ND, IT6415ND

30A,45A,60A

12V/24V/36V/48V

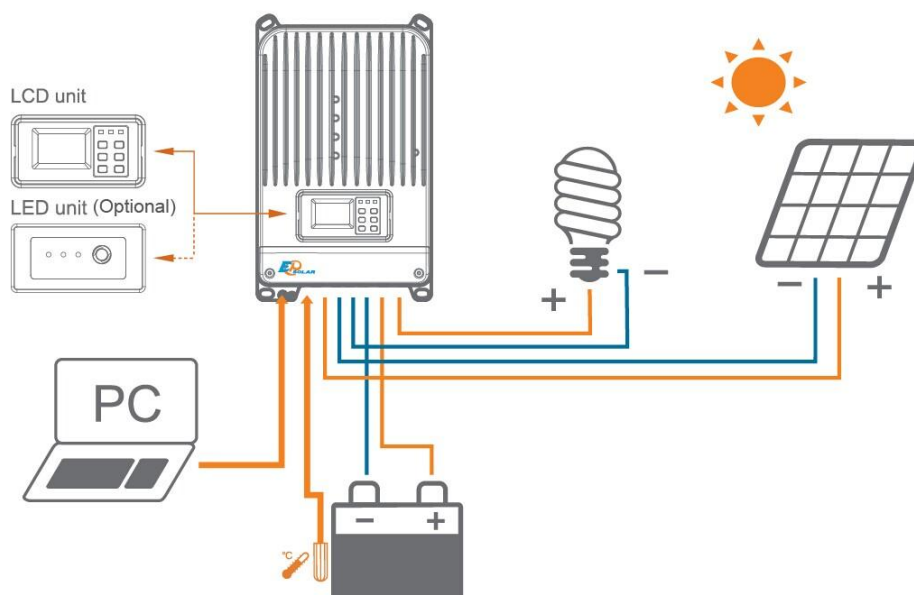
### Features:

- ◆ Advanced MPPT algorithm with the max. tracking efficiency of 99%.
- ◆ Multi-phase synchronous rectification technology realizing peak conversion efficiency 98%
- ◆ Dual-core(ARM CPU+DSP) control architecture improves the system response speed and optimizes the performance of the system

- ◆ Multiphase control technology, optimizes charging current smoothness, reduces ripple and improves the system efficiency
- ◆ 128\*64 dot-matrix LCD intuitively displays data and state, 6 buttons combinations for easy operation
- ◆ Four battery type options: Sealed, Gel, Flooded and User-defined
- ◆ Energy statistics recording, it is convenient for users to view charging and discharging energy of each day, month, year and total value.
- ◆ Diversified load control mode
- ◆ Programmable battery management parameters
- ◆ Built-in running data and event logging, max. 15 months
- ◆ Extensive communication capabilities (RS232,RS485 with Modbus protocol, CAN Bus extendable)
- ◆ PC software available for real time monitoring and parameter setting
- ◆ Field upgradable firmware

### Electronic protections:

- ◆ PV short circuit protection
- ◆ PV over current protection
- ◆ Reverse current protection at night
- ◆ Battery reverse polarity protection
- ◆ Load short circuit protection
- ◆ PV overvoltage protection
- ◆ PV reverse polarity protection
- ◆ Over temperature protection
- ◆ Load overload protection





### Accessories :

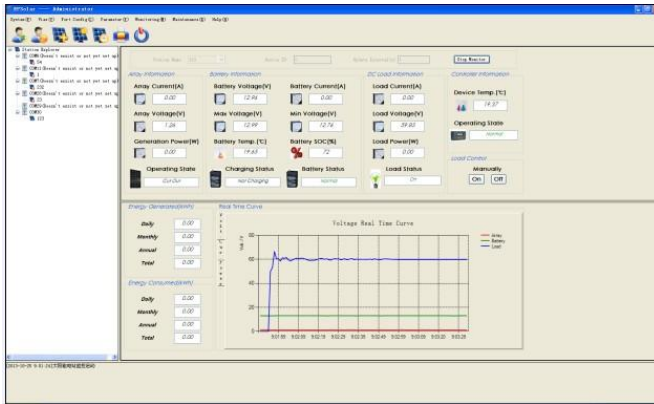


Remote temperature sensor  
RTS300R10K5.08A



PC communication cable  
CC-USB-RS485-150U-3.81

## PC software:



## Display interface:



## Technical specifications

| Model                          | IT3415ND   | IT4415ND    | IT6415ND    |
|--------------------------------|--|-------------|-------------|
| Nominal system voltage         | 12V/24V /36V/48V auto work                                     |             |             |
| Rated battery current          | 30A  | 45A         | 60A         |
| Rated load current             | 30A  | 45A         | 60A         |
| Max. PV open circuit voltage   | 150V   |             |             |
| Voltage range                  | 8~72V  |             |             |
| Max. PV input power            | 400W (12V)   | 600W (12V)  | 800W (12V)  |
|                                | 800W (24V)   | 1200W (24V) | 1600W (24V) |
|                                | 1200W (36V)  | 1800W (36V) | 2400W (36V) |
|                                | 1600W (48V)  | 2400W (48V) | 3200W (48V) |
| Self-consumption               | 1.4~2.2W   |             |             |
| Equalize charging voltage      | Sealed: 14.6V, Flooded: 14.8V, User-defined: 9~17V             |             |             |
| Boost charging voltage         | Gel: 14.2V, Sealed: 14.4V, Flooded: 14.6V, User-defined: 9~17V |             |             |
| Float charging voltage         | Gel /Sealed /Flooded: 13.8V, User-defined: 9~17V               |             |             |
| Low voltage reconnect voltage  | Gel /Sealed /Flooded: 12.6V, User-defined: 9~17V               |             |             |
| Low voltage disconnect voltage | Gel /Sealed /Flooded: 11.1V, User-defined: 9~17V               |             |             |
| Grounding                      | Common negative  |             |             |
| Tracking efficiency            | 99%  |             |             |
| Peak conversion efficiency     | 98%  |             |             |

\* Technical data for 12V system at 25°C

| Mechanical | IT3415ND          | IT4415ND          | IT6415ND          |
|------------|-------------------|-------------------|-------------------|
| Overall    | 358x219x102mm     | 382x231x107mm     | 440x231x110mm     |
| Mounting   | 339x195mm         | 362x205mm         | 420x205mm         |
| Terminal   | 25mm <sup>2</sup> | 35mm <sup>2</sup> | 35mm <sup>2</sup> |
| Net Weight | 3.7kg             | 4.6kg             | 5.9kg             |

| Environmental       |               |
|---------------------|---------------|
| Ambient temp. range | -25°C ~ +55°C |
| Storage temp. range | -30°C ~ +85°C |
| Humidity range      | 95% N.C.      |
| Enclosure           | IP20          |

### Conversion Efficiency Curves:

Illumination Intensity: 1000W/m<sup>2</sup>    Temperature: 25°C  
 Test model: IT6415ND

